

# STARSCAPE

enter a space odyssee...

Starscape is a visually stunning tale about cosmic explorers and their fight to restore harmony to a universe fallen into discord.



The tale begins at the dawn of time  
when galaxies of stars explode into being.

From the mystery and beauty of the cosmos,  
the explorers appear and start  
to discover and play....



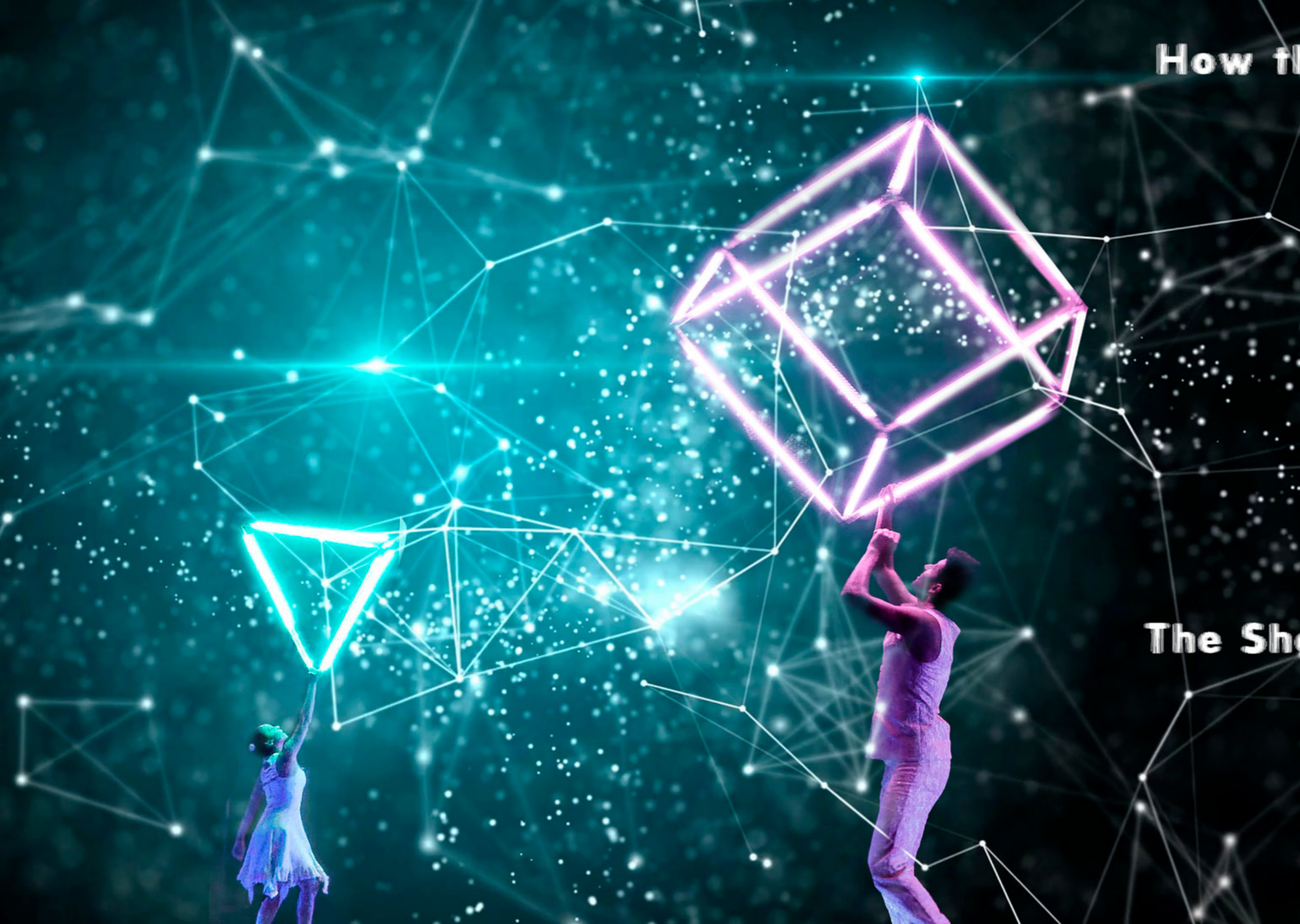


But when their game  
doesn't work anymore,  
they must collaborate  
to create something  
which will endure;  
something of worth & meaning

Through their strength,  
perseverance & creativity  
(as well as help from the audience)  
they will succeed.



The show finishes with a celebration in which the clients logo is revealed through a complex and choreographed symbiosis of dance, led juggling and 3D animation



## How the Show flows

Paramount in Starscape is the clever interaction between the Artists & the Screen.

The show combines 3D animation & state-of-the-art light-dance-technology with dance, juggling & acrobatics.

Objects which appear on-screen are seamlessly brought on-stage through a series of carefully timed illusions.

The characters catch shooting stars, playfully battle with constellations and conspire to paint the forms which they must master during their dynamic live performance.

As this illusion is continuously repeated throughout the show. The Audience experiences being transported on an adventure through the mystery and beauty of space.

## The Show's philosophy

Through strength, perseverance and creativity we have the potential to make meaningful and enduring achievements.

This is as true for individuals as it is for companies or any group of people who aspire to achieve something of value.

## Light Dance Technology

The show features the highest resolution light dance props available (created by Pyroterra LightToys).

They are programmable, reliable and state-of-the-art.

We partner with the manufacturer to create custom LED props (LED Cyr Wheel, LED Cube, LED Square, etc).



## Performance Technique & Experience



Director & Choreographer **Srikanta Barefoot** has a breadth of experience in theater & circus. As a Principal Artist & the Fire-Dance Choreographer for the Cirque du Soleil, Srikanta helped to create ZAIA & performed over 700 shows over 3 years before leaving to start his own company. As director of Fusion Arts, he remains at the forefront of his art & performs regularly at internationally televised events (America's Got Talent, IIFA-International Indian Film Awards, Das Supertalent, G20 Summit, etc). Since its creation in 2014, Fusion Arts provides elegant event entertainment at corporate events and private parties worldwide (Vivatch 2019- Paris, Globe Soccer Awards 2014- Dubai, 40th Anniversary of the Maltese Republic 2014, etc).



## 3D Animation

**Xavier Aliot** is an expert in 3D animation & has spearheaded the production of numerous animated films. As a professor of 3D animation, he is highly sought, not only for his technical prowess but for his innate creativity. A man of many talents, Xavier is a published author & poet with a refined sense of rhythm, symbol & image narration.

## Technical Requirements

### Screen Type:

A screen is required to display the 3D animation.

**An LCD or LED Screen is highly recommended** for its brightness, color & contrast. The screen allows for true blacks which is particularly important in this show for two reasons; Firstly, the backdrop to the animation is space which requires true black to create the illusion of depth; Secondly, the light emitted from LED dance props will not bleed onto this type of screen. An LCD or LED screen is also the essential choice in environments where the performance area risks being lit by ambient light (outdoor events, or any events with conditions unlike a theater).

**A Standard Projection Screen may be used** at events where the performance area is sure to be sombre (theater-like conditions). However, even in ideal conditions this solution is second-best. The images will be displayed in lower definition, the blacks will not be true blacks & the LED dance props will bleed onto the screen, detracting from the illusion of being in space & degrading the overall quality of the show.

Large: 1, 2, 4 or 6 Artists  
Screen: 8m x 16m  
Stage: 10m x 16m

Standard: 1, 2 or 4 Artists  
Screen: 6 x 12m  
Stage: 8m x 12m

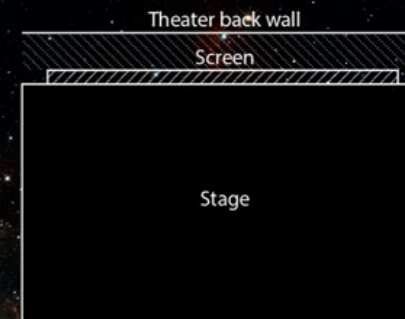
Small: 1 or 2 Artists  
Screen: 4 x 8m  
Stage: 6m x 8m

### Screen Placement:

The screen is situated flush against the back of the stage, allowing the Artists to create the illusion of interacting with the animated images & to be viewed as part of the animated universe.

Notice that LCD/ LED Screens require much less floor-space than a standard projection screen.

### LCD Screen



### Standard Screen with Projector

